



The Benefits of CCTV for farmers

Thainstone/SAC 12/02/2018

1

The Benefits of CCTV for farmers

- **Financially efficient**
- **Time effective**
- **Personal health / animal health and safety**
- **Future developments**

2

Financially efficient

One of the biggest gains from installing a livestock camera(s) is the financial benefits resulting from reduced animal mortality. Farmers we spoke to felt they had been able to intervene in the calving or lambing process, saving animals. In many cases the value of the animals saved more than made up for the cost of installation.



3

Time Effective

- Less time spent monitoring animals
- Animals can be monitored from PC/Phone (smart phone)
- Watch birthing process peacefully from PC/Phone ensuring health and safety of animal

Many farmers told us that they could watch the whole calving – see the calf born, that the bag was away from its face and that the calf went on to have its first suck

4

Personal Health /Animal Health

- Sleep is important!
- Reduces sleep problems as no longer need to leave the house to visit the shed
- Feeling more refreshed the next day
- Reduces the dangers of farming on your own in that the knowledge that a partner can share the responsibility watching animals remotely

5

Before and After CCTV Installed



6

Animal health and safety

- Many were convinced that before the camera was installed their presence in the shed would put the animals off getting on with their delivery naturally. This could often mean hours of hanging around on a dark and miserable night. With the cameras in place, the hanging around could happen in the comfort of their own home, with less disturbance to the animals routine.
- We recommend that microphones are installed which adds a great benefit allowing the farmer to hear what is going on as well as seeing
- Allows early detection on any signs of ill health remotely e.g. milk fever
- Other benefits that were also mentioned were, [getting WiFi in the farm steading](#) allowing you to use email etc from your phone, as well as dual purposing the camera i.e. using the cameras for security as well as lambing/ calving.

7

PTZ Camera (Night Vision) Video Clip

The Set up shown is approx. 1 mile away from the farm house



8

PTZ camera (Video Clip)

Camera can be moved remotely from a PC or a mobile phone

The Set up shown is approx. 1 mile away from the farm house



9

Static Camera – Video Clip

The Set up shown is approx. 1 mile away from the farm house



10



11



12



Viewing on an iPad

Note – Remote viewing is determined on your internet speed, we would always check this first and advise as some installers will only tell you after.

13

Additional Cameras

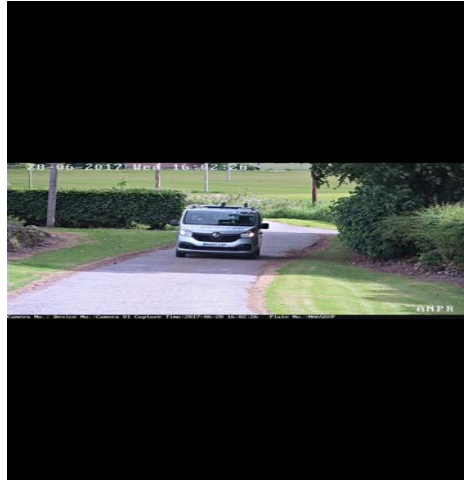
Cameras can be added to the system for security. Everything from Standard cameras to ANPR (Automatic Number Plate Recognition) Other farms/sheds can be linked up using wireless transmitter's and receivers which can go for miles. (Line of Sight)

Future Cameras

Thermal cameras is an option being looked at which has potential to tell if a Cow is going to go into labour, has milk fever or anything else that could cause a change in the cows optimum temperature.

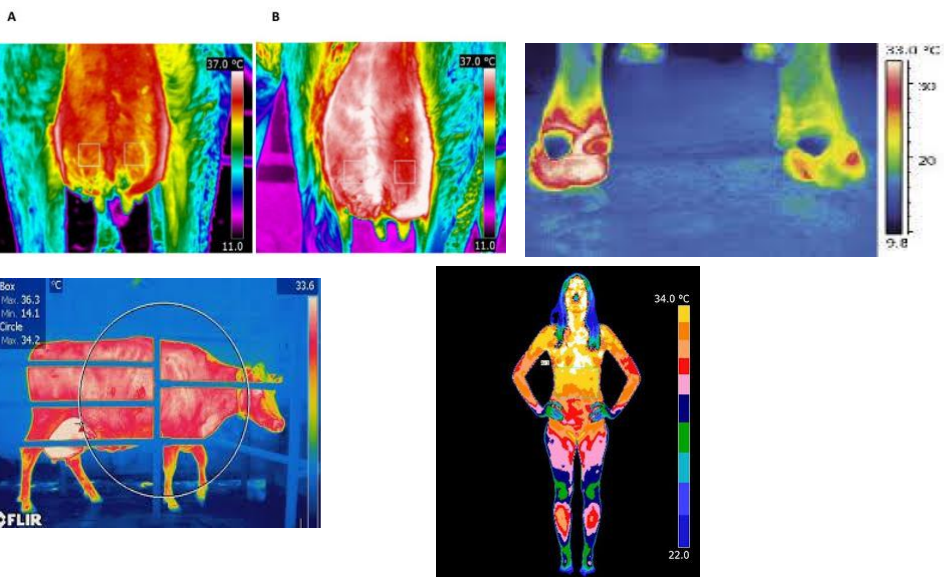
14

ANPR – Automatic Number Plate Recognition



15

Thermal images



16



Any Questions

17



01224 518418

Option 1 – Electrical

Option 2 – Security

18