

Developing Safe Farming Practices



**Farm
Advisory
Service**

Guide 5A: Machinery Safety

National Advice Hub
T: 0300 323 0161
E: advice@fas.scot
W: www.fas.scot

Many agricultural machines have potentially dangerous parts, which can cause serious or fatal injuries. Time pressure, inexperienced operators, lone working, human error and unguarded parts are the main causes of accidents.

See 'Useful links' at the end of the guide for sources of detailed guidance.

ALWAYS:

- Follow 'Safe stop' procedures
- Use a machine that is suitable for the task
- Keep away from moving machinery
- Keep children away from all operational machinery
- Follow a safe system of work, making adjustments and clearing blockages
- Ensure guards and other safety devices are properly fitted and working
- Service and maintain machinery in good working condition
- Train operators where required
- Remember, other people and children may be around, even if you're not expecting them
- Carry a mobile phone with relevant emergency information and emergency contact numbers



'Safe stop' is the most important safety action of all:

- Engage handbrake
- Controls in neutral
- Engine off
- Remove key



Safe vehicles, machines and handling equipment:

- capable of safely performing the jobs to be done
- inspected daily and faults repaired promptly
- properly maintained (braking systems, oil, fuel, water levels, tyre pressure, lights, indicators, guards and safety chains)
- fitted with roll-over protective structures and seatbelts if there is a risk of overturning



The European Agricultural Fund
for Rural Development
Europe investing in rural areas



Scottish Government
Riaghaltas na h-Alba
gov.scot

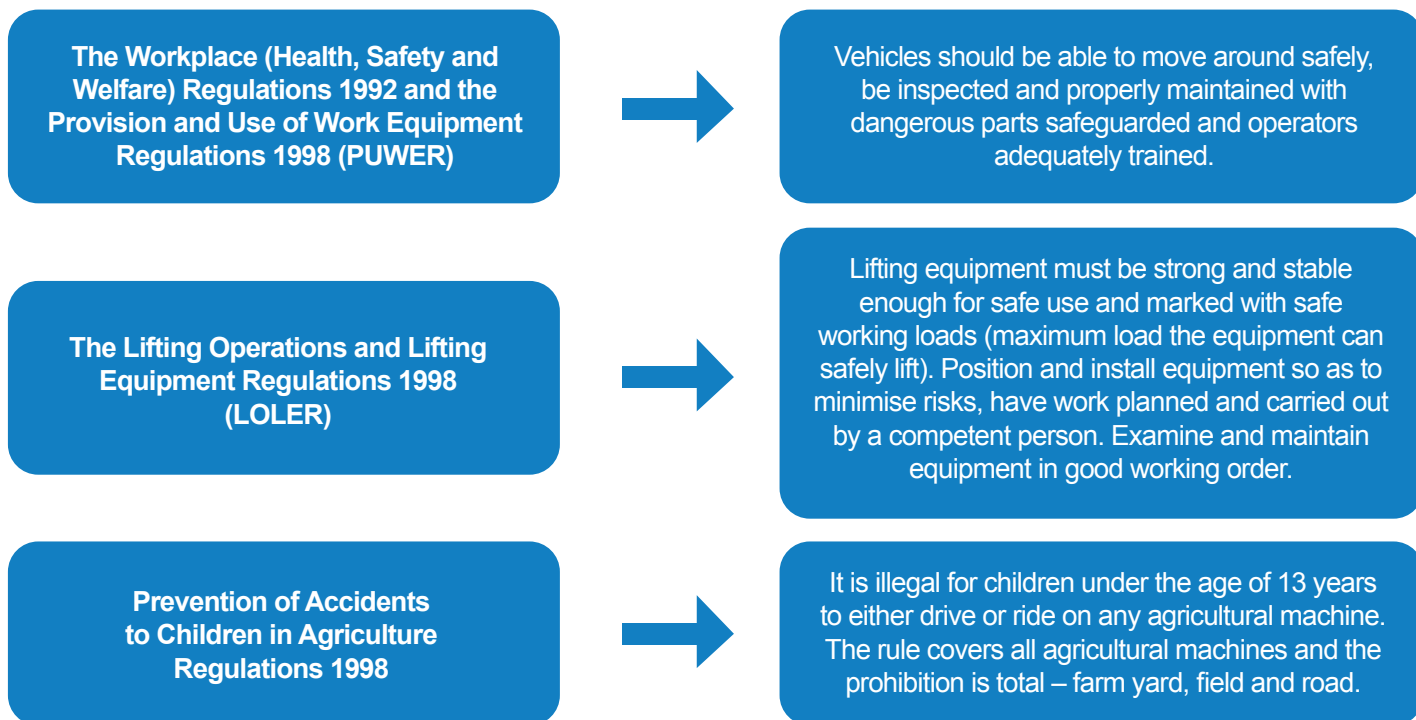
Safe driver:

- medically fit to drive – will your health, stress level or fatigue level affect your ability to work safely?
- trained and authorised to drive
- know how to safely enter and exit the vehicle (follow ‘Safe stop’ procedure)
- never allow passengers to ride in vehicle cabs unless they are over 13 years old and sitting safely on a passenger seat
- all items secured in cab
- seatbelt, first aid kit and mobile phone/radio

Safe site:

- separate vehicles and pedestrians where possible
- ensure all drivers are aware of parking areas, one-way systems etc;
- well maintained and adequately lit vehicle routes
- clear warning signs and speed limit signs
- consider location of power lines
- take account of weather and ground conditions

There are **laws** in place to regulate the standards of safety for equipment used in work environments and to protect children:



https://www.hse.gov.uk/pubns/books/hsg270.htm	Farmwise – Your essential guide to health and safety in agriculture
www.hse.gov.uk/pubns/indg241.pdf	Working safely with agricultural machinery
www.hse.gov.uk/agriculture/topics/machinery/safe-use-1.htm	Using machines safely
www.hse.gov.uk/agriculture/topics/machinery/safe-use-2.htm	Hazardous areas on specific machines
www.hse.gov.uk/pubns/indg185.htm	Using tractors safely
www.yellowwellies.org/working-with-machinery/	Working with machinery
www.yellowwellies.org/resources/	Farm safety checklist
www.hse.gov.uk/pubns/indg472.htm	Preventing accidents to children on farms
www.hse.gov.uk/agriculture/topics/children.htm	Children and farm machinery