

News from the Farm Advisory Service:

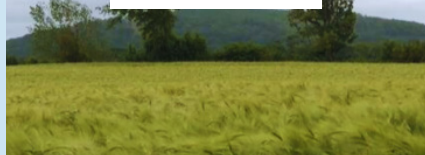


IMPROVING EFFICIENCY AT HODDOM & KINMOUNT ESTATE

Improving efficiency at Hoddom & Kinmount Estate

In this video, we speak to James Marshall, farm manager at Hoddom and Kinmount estate. James provides us with an update on what actions have been taken to improve efficiency on farm, including soil testing, use of GPS and the lessons learned in the process.

Watch our video by using the QR code or find our YouTube channel with the link below www.youtube.com/FASScot



Preparing for Sustainable Farming (PSF) Deadline

All claims must be submitted by end of February 2025

Government-funded support for animal welfare over the winter period

Maintaining high standards of animal welfare during winter not only benefits your animals but can also support the long-term sustainability and profitability of your farming operations. Animal welfare advice is one of the thirteen specialist advice options available through the Farm Advisory Service (FAS) and supports farmers and crofters to adopt and finance best practices in livestock management.

Creating a warm, healthy, and stress-free environment for your animals during the winter months can help reduce illnesses and veterinary costs, while also enhancing farm efficiency by promoting animal productivity and longevity. Through FAS, you can access up to £3,200 in funding to receive specialist advice on up to two

topics including animal welfare.

A qualified adviser will visit your farm or croft and provide a comprehensive report on how you can improve management practices, which could include advice on feeding, bedding, health monitoring or animal housing plans. Last year, **98% of farmers** rated the advisors' practices as either good or excellent, and **82%** advised they planned to implement all recommended actions.

To find out more and apply for funding, visit www.fas.scot/advice-grants.

For support choosing your options and finding an advisor contact FAS at advice@fas.scot or **0300 323 0161**.

Improving efficiency through soil sampling and nutrient budgeting

GPS and basic routine soil sampling has been carried out at Hoddom and Kinmount Estate, near Annan, funded by the Preparing for Sustainable Farming grant.

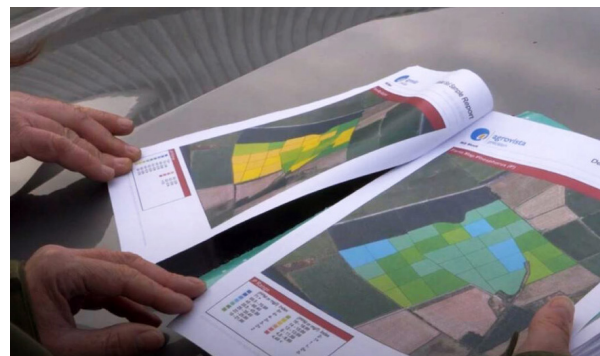
GPS soil mapping identifies the variability within a field, allowing inputs to be applied in a more precise way. Rather than blanket applications of lime and fertiliser across the fields, James Marshall the farm manager will apply lime, phosphate and potash by variable rate, thereby ensuring only the amount required is applied. Over time the pHs and nutrient status of the fields will become more uniform.

Results from routine soil sampling showed that the pHs, phosphate and potash levels were low in some fields. To bring levels up to optimum, in some of the silage fields, James is going to apply wood ash and digestate; straight nitrogen will be applied to help meet the crop's nitrogen requirements. The wood ash, a by-product will supply lime, phosphate and potash; digestate will supply nitrogen, phosphate and potash. Utilising these products will help to reduce bagged fertiliser use.

When soil analysis is combined with nutrient budgeting it facilitates the best use of nutrients from inorganic and organic fertiliser by matching applications to crop requirements and reducing loss of nutrients to the environment.

Gillian Reid, SAC Consulting

To read more about the case study for Hoddom and Kinmount estate, visit:
www.fas.scot/article/improving-efficiency-through-soil-sampling-nutrient-budgeting/
www.fas.scot/article/measuring-efficiency-at-hoddom-kinmount-estate/



Free Events

At the Farm Advisory Service we run a range of events both online and in-person.

Visit www.fas.scot/events to sign up or contact the advice line and we'll help you get booked on.

Crofting Discussion Group - Tiree
Tiree, 20th January, 7:00pm - 9:00pm

The Cow of the Future Part 4 - Designing the Future Cow
Online, 21st January, 7:30pm - 8:30pm

Morayshire WiA - Responsible Medicine Use
Huntly, 22nd January, 10:00am - 12:00pm

What's the Solution to Pollution?
Thurso, 22nd January, 11:00am - 2:00pm

Understanding Your Farm Carbon Audit and What it Means
Online, 23rd January, 7:00pm - 8:00pm

Common Grazings Finance & Procedures - Helmsdale Part 1
Helmsdale, 23rd January, 7:00pm - 9:30pm

Sheep & Goat Inventory 2024



The annual Sheep and Goat Inventory is a compulsory requirement for all Scottish producers who keep sheep and/or goats on their holding. The 2024 inventory is currently open and will close at midnight on 30th January 2025.

In a change to previous years, the inventory is now a fully online process and cannot be completed any other way. No letters or paper reminders will be issued. Instead, producers will have received an email to their registered email address.

The survey requires all sheep and goat keepers to report on the number of sheep and goats present on their holding(s) as of the 1st December 2024. If the keeper has sheep and goats, the survey requires this to be split between females of any age put to the tup in 2024, all other sheep (including males and non-breeding females of all ages) and goats (including males and females of all ages). A separate line should be used for each holding. The totals should account for all sheep and goats you own.

To complete the survey online for the first time, keepers need to register by providing an active email address and main location code via survey.scoteid.com. Once registered, you will be taken to the survey page to provide the inventory information. Following completion, a receipt will be sent to the provided email address to confirm completion. You will also be able to re-access the inventory post-submission to alter any incorrect information.

In cases where an active email address is not held by the keeper contact SCOTEID on 01466794323.

Failure to complete the inventory within the provided 30-day period can result in liability for conviction and issues with future inspections.

Rachel Baillie, SAC Consulting

For more information, visit:
www.gov.scot/publications/sheep-and-goats-annual-inventory/
www.scoteid.com/node/155

Scotland's Farm Advisory Service is funded by the Scottish Government. It is delivered by SAC Consulting, part of Scotland's Rural College, and Ricardo Energy and Environment.

National Advice Hub
T: 0300 323 0161
E: advice@fas.scot
W: www.fas.scot

If you need more advice on any topic, the Farm Advisory Service has a range of support and help available:

Advice line

For free telephone advice on a wide variety of topics including cross compliance, water framework directive requirements, climate change and other technical issues call us on **0300 323 0161** or email advice@fas.scot. The advice line operates between 9am and 5pm Monday to Friday.

Bespoke Advice and Grants

FAS can also help you to increase the profitability and sustainability of your farming business through Scottish Government grants including Integrated Land Management Plans (ILMPs) – worth up to £2,000.

The ILMP will identify opportunities and cost savings for your business, based on an independent and confidential assessment of your business by an experienced farm business adviser of your choosing. As part of your plan you can choose to benefit from up to two further specialist advice plans.

Online

Our website contains articles, videos and much more at www.fas.scot