

Greening Checklist for 2026 Ecological Focus Areas: Margins

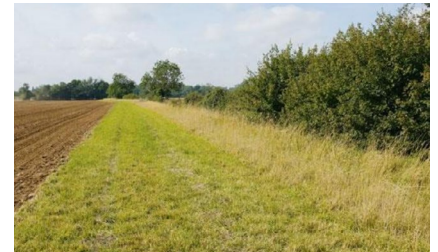


**Farm
Advisory
Service**

National Advice Hub
T: 0300 323 0161
E: advice@fas.scot
W: www.fas.scot

Margins provide an important habitat for farmland biodiversity and contribute to wildlife and ecological networks and benefit water quality.

Answer each question below with a **yes**, **no** or **n/a** to help check if you are complying with the rules for the 2026 scheme year. If the rules are applicable to you, and you are compliant, your answers to the questions should be yes.



EFA Margin

- Is the land you have used to support EFA margins:
 - On your holding and on a claimed Basic Payment Scheme eligible agricultural parcel?
 - On, adjacent to, or within five metres of arable land or contiguous to a claimed EFA option?
 - A minimum of 0.01 hectares in size and between 3 and 20 metres wide?
 - Around the margin of the field or splitting two crops within the field?
 - Clearly identifiable and distinguishable on the ground from 1st January to 31st December inclusive?
- Have you prepared an EFA map, detailing the location and size of your EFA margins?
- Have you controlled injurious weeds, invasive weeds and certain other weed species by spot herbicide application or hand roguing?
- You have **not** undertaken the following activities on your EFA margins from 1st January to 31st December inclusive:
 - Cleaned ditches and spread the spoil?
 - Stored material on the margin or used it for regular access?
 - Grazed the margin if it contains or is adjacent to a watercourse?
 - Applied fertiliser, except to aid establishment of wild bird seed mix, wild flower mix or a diverse grass sward?
 - Applied pesticides, with the exception of herbicides for the spot treatment of injurious, invasive weeds and other weed species?

--

Note: The cover on EFA margins can be changed to establish a wildflower mix, wild bird seed mix or a diverse grass sward containing pollen bearing plants. The EFA margin can be cut after the 15th July (including for silage and hay) and it can be grazed after 15th July (as long as it does not contain or is adjacent to a watercourse)

The detail contained within this information note represents a summary of the key scheme requirements. To ensure compliance with all aspects of the scheme, please refer to the full scheme guidance which is available at: www.ruralpayments.org/topics/all-schemes/basic-payment-scheme/basic-payment-scheme-full-guidance/greening---bps/greening-guidance-2026/