

Working in or near watercourses

www.sepa.org.uk





Vegetation & debris removal





Running repairs



Reinstatement (recent failures)



Vegetation & debris removal



Running repairs



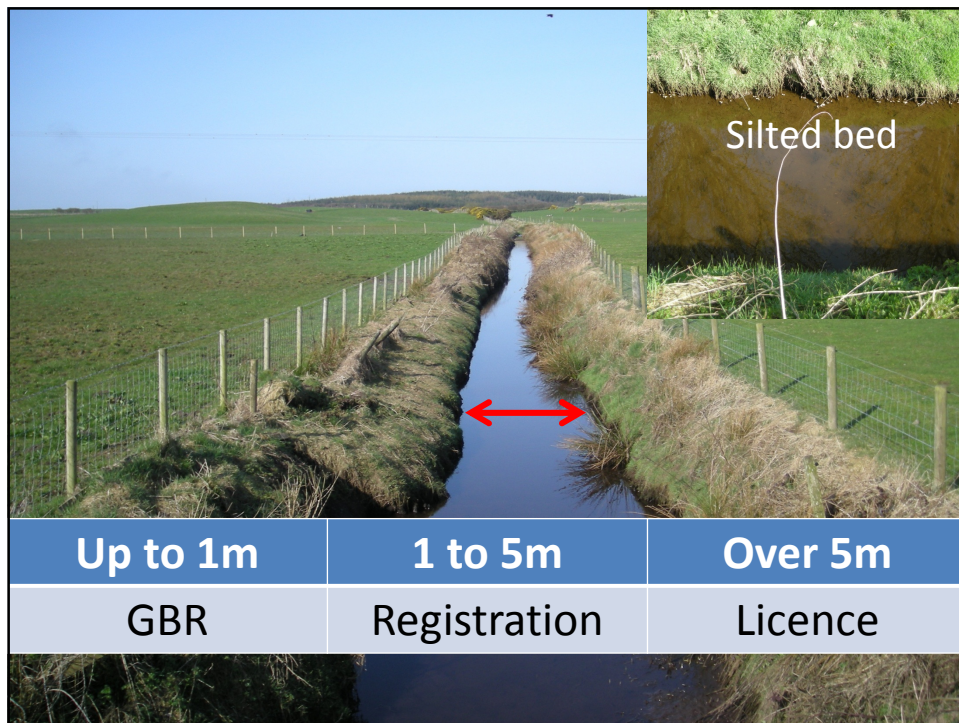
Reinstatement (recent failures)



Bed works



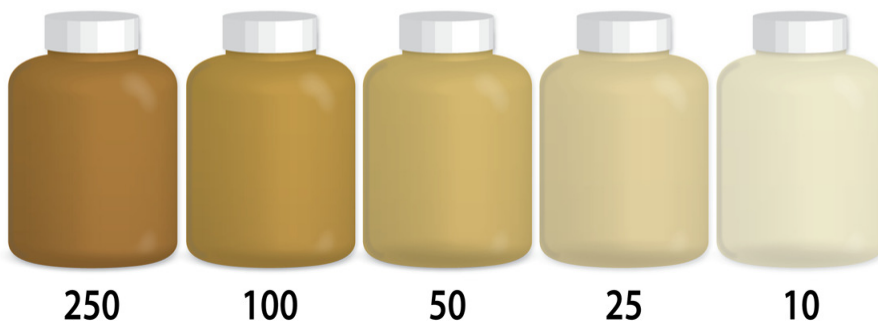






Turbidity (NTU)

Water Samples:



250

100

50

25

10





Bed works – gravel rivers







<ul style="list-style-type: none">• Less 1m wide*• Culverts• Weirs• Intakes	<ul style="list-style-type: none">• Dry bars• Bridges	<ul style="list-style-type: none">• Large works
GBR	Registration	Licence







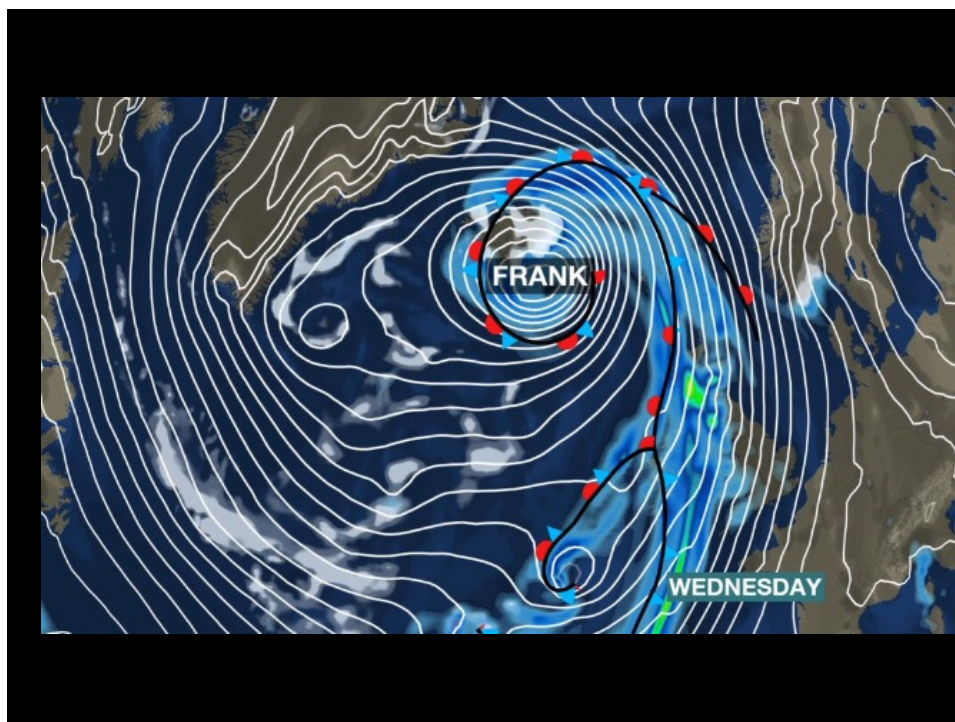
Bank works



3 weeks later



<ul style="list-style-type: none"> • Up to 10m or 1 x channel width (green bank) • Any length using parts of trees 	<ul style="list-style-type: none"> • Up to 50m (green bank) 	<ul style="list-style-type: none"> • Longer lengths • Grey bank
GBR	Registration	Licence



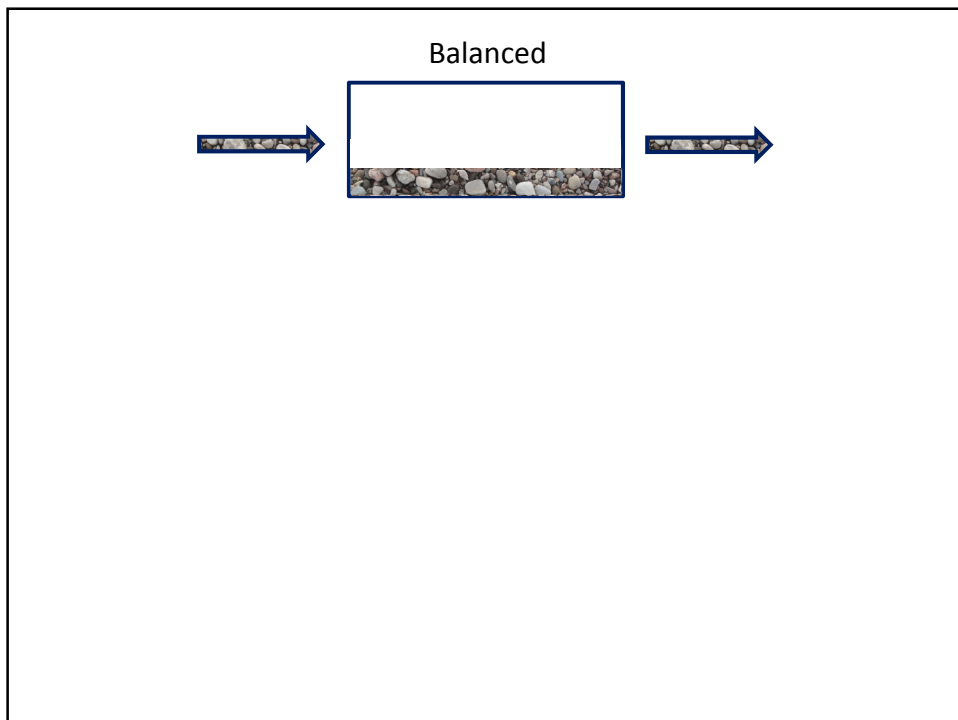


SEPA
Scottish Environment
Protection Agency

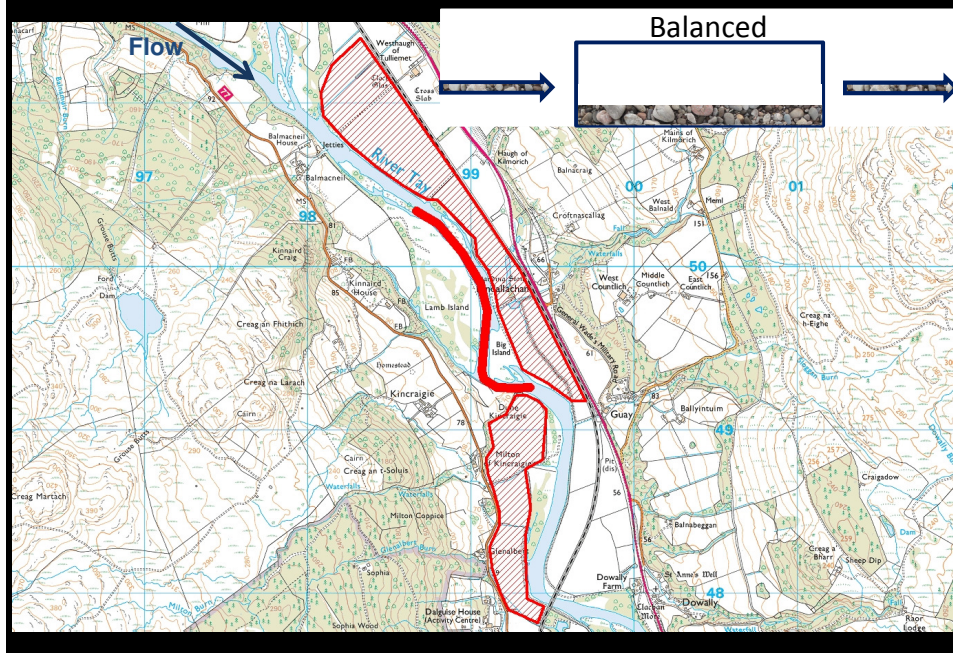
NFUS & SEPA joint initiative

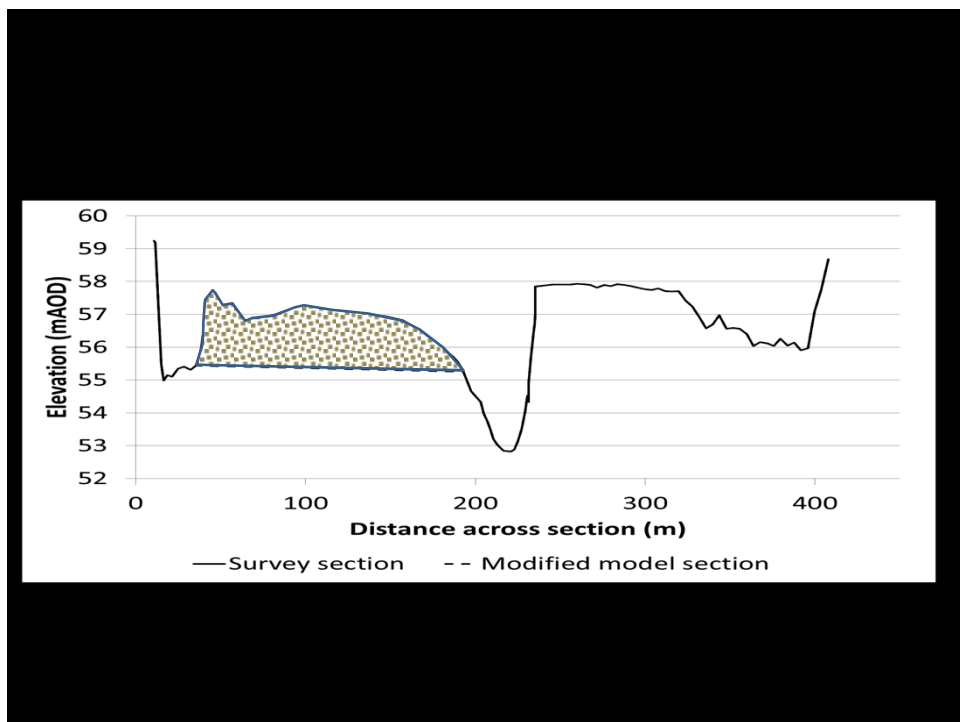
www.sepa.org.uk

Gravel & flooding

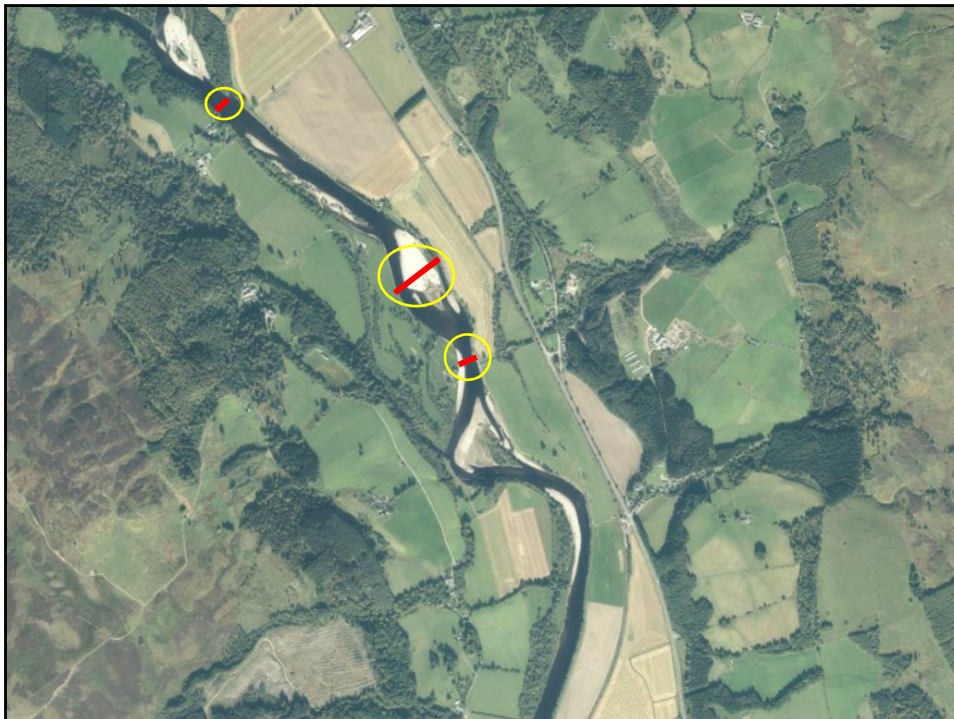
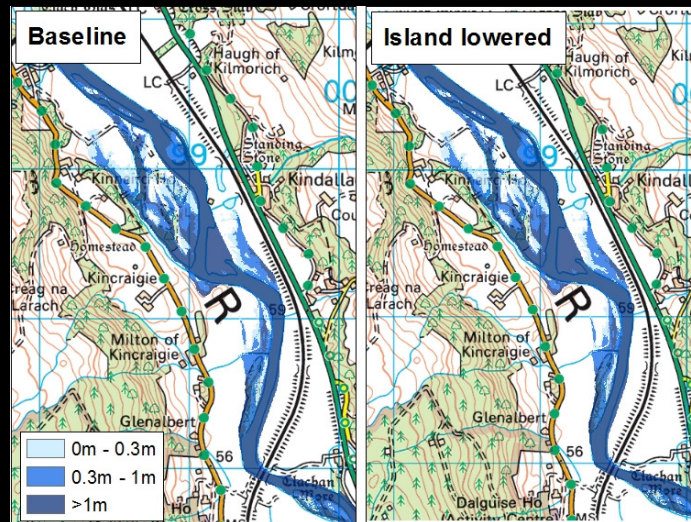


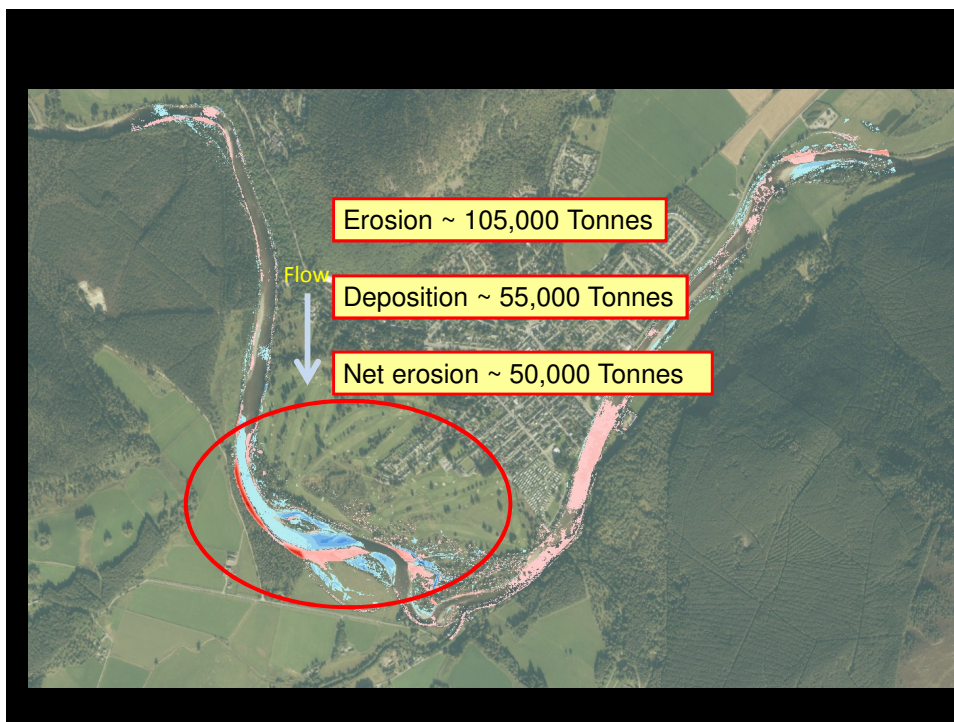
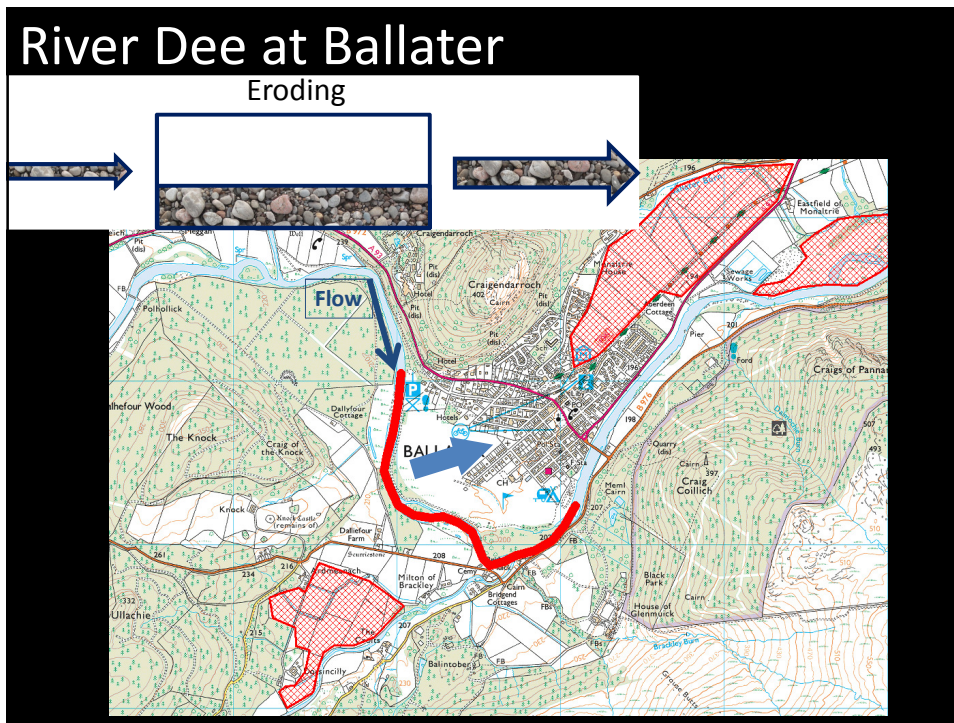
River Tay at Kindallachan

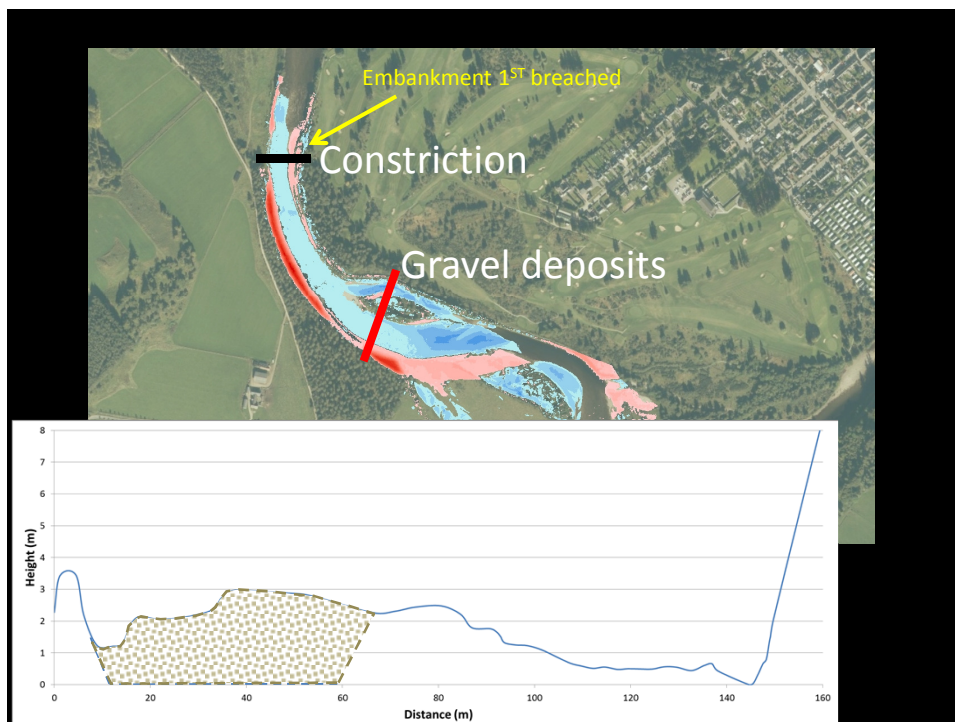
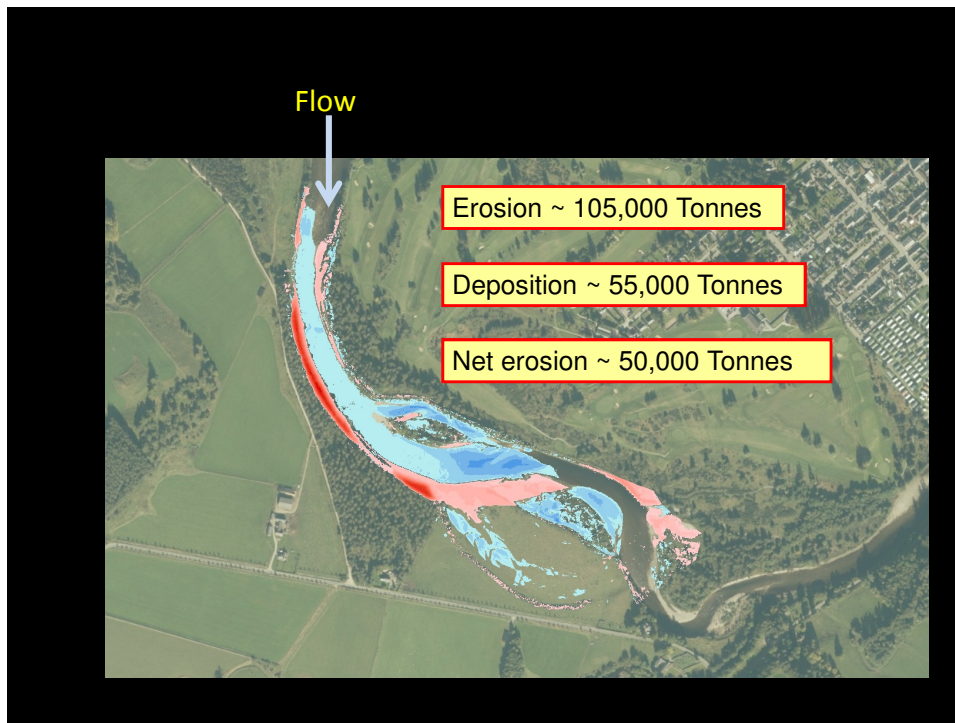


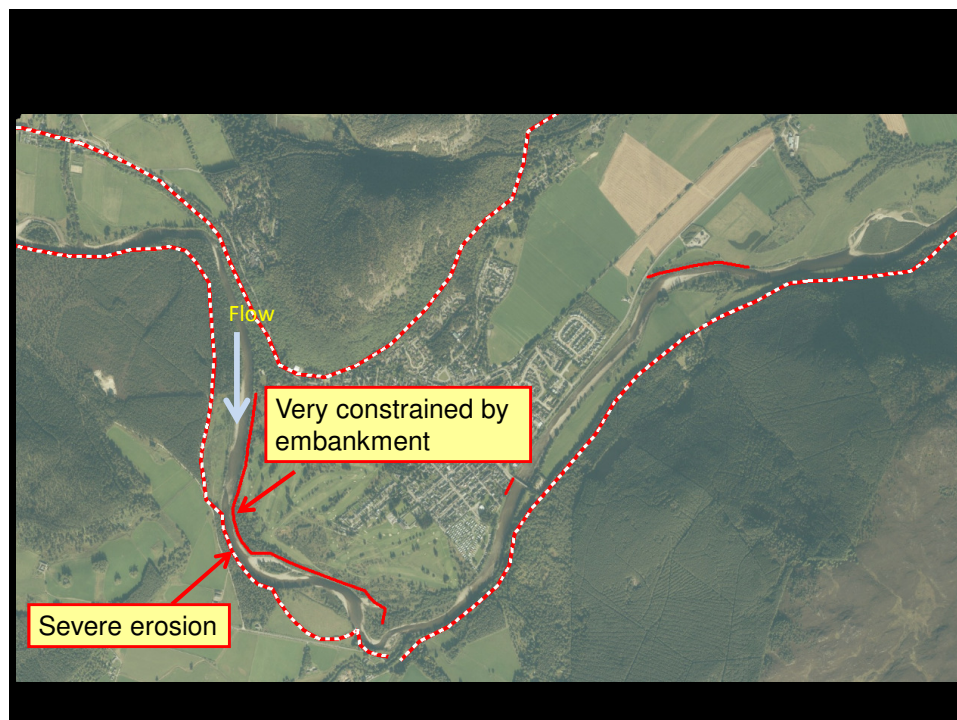
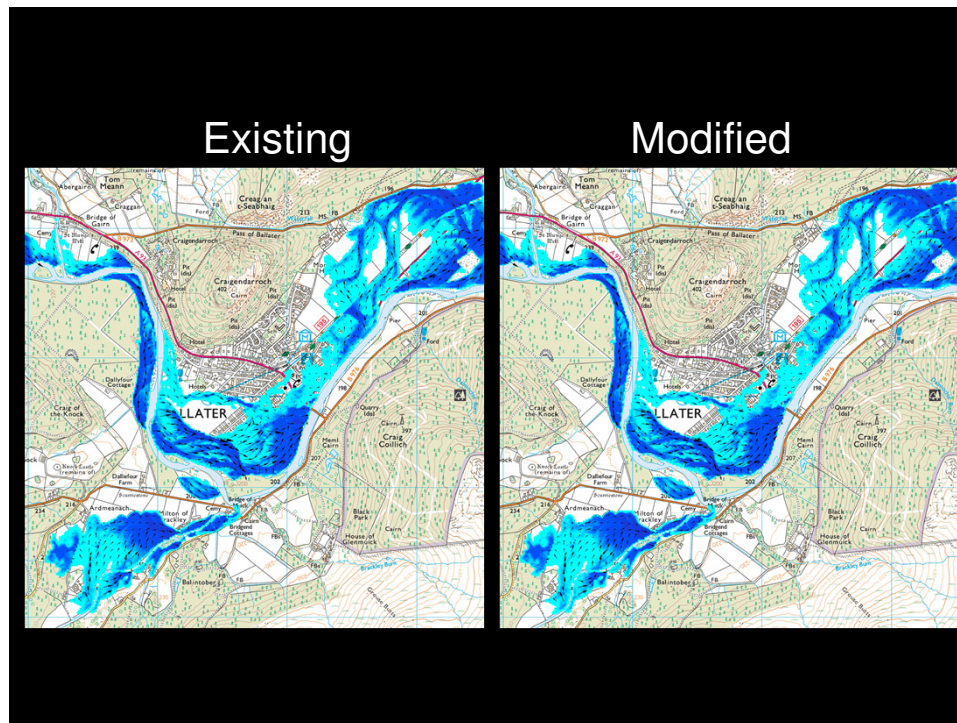


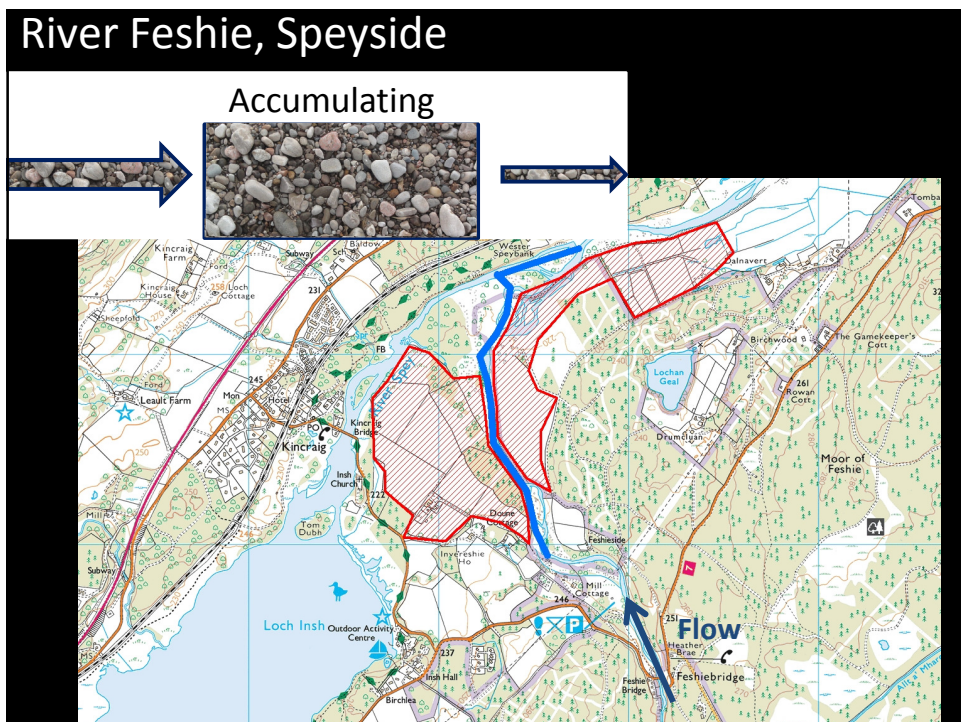
Several times per year flood ($700 \text{ m}^3/\text{s}$)

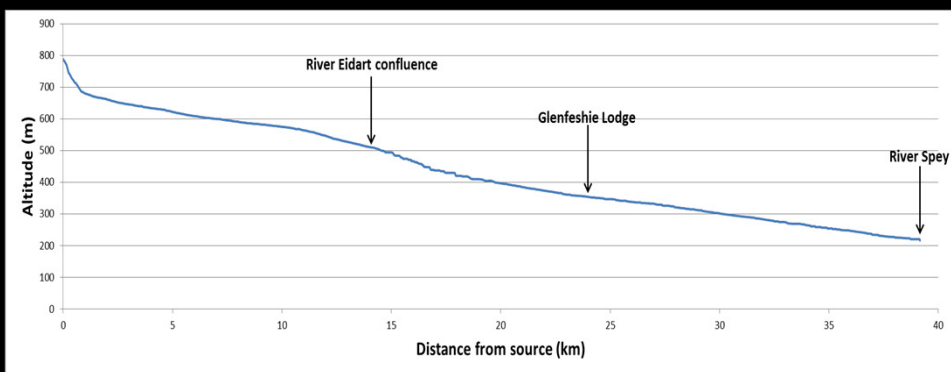


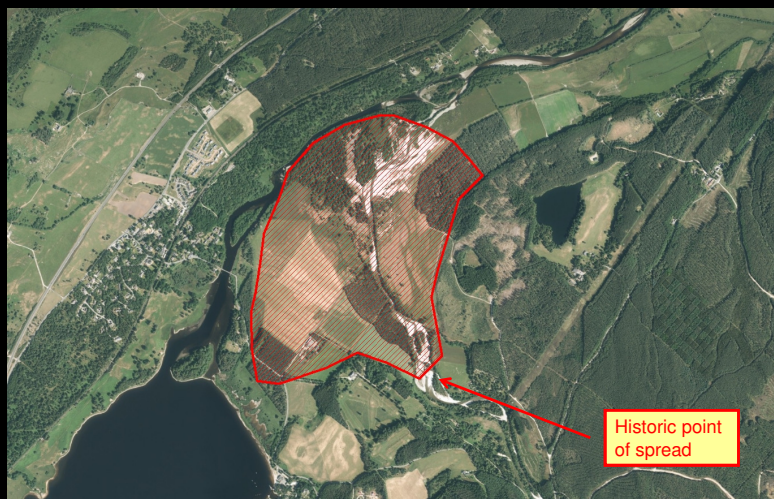
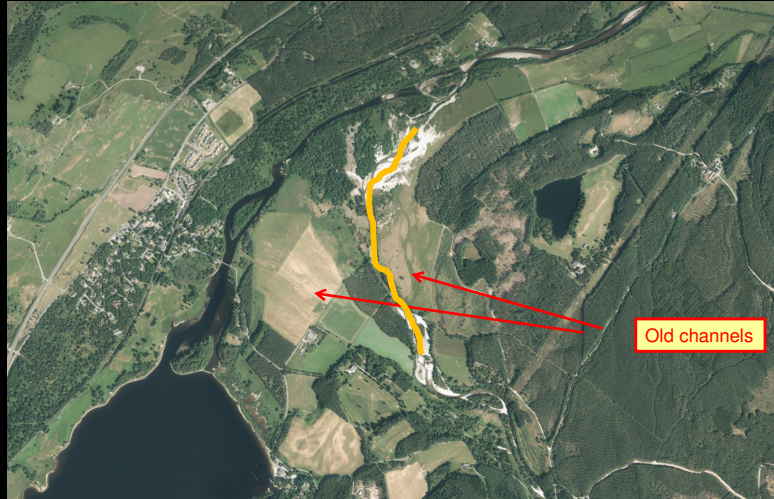








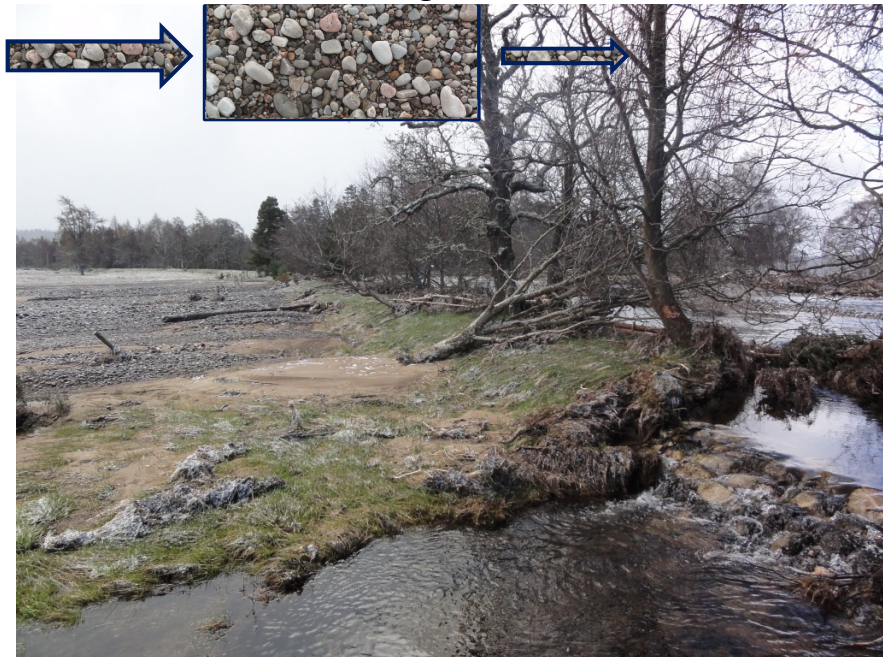




Options



Accumulating





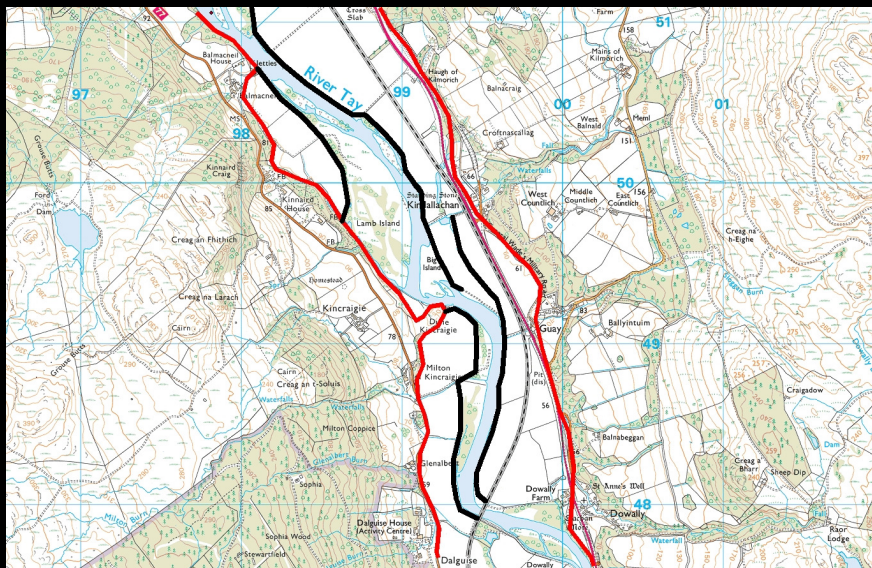
River bank erosion

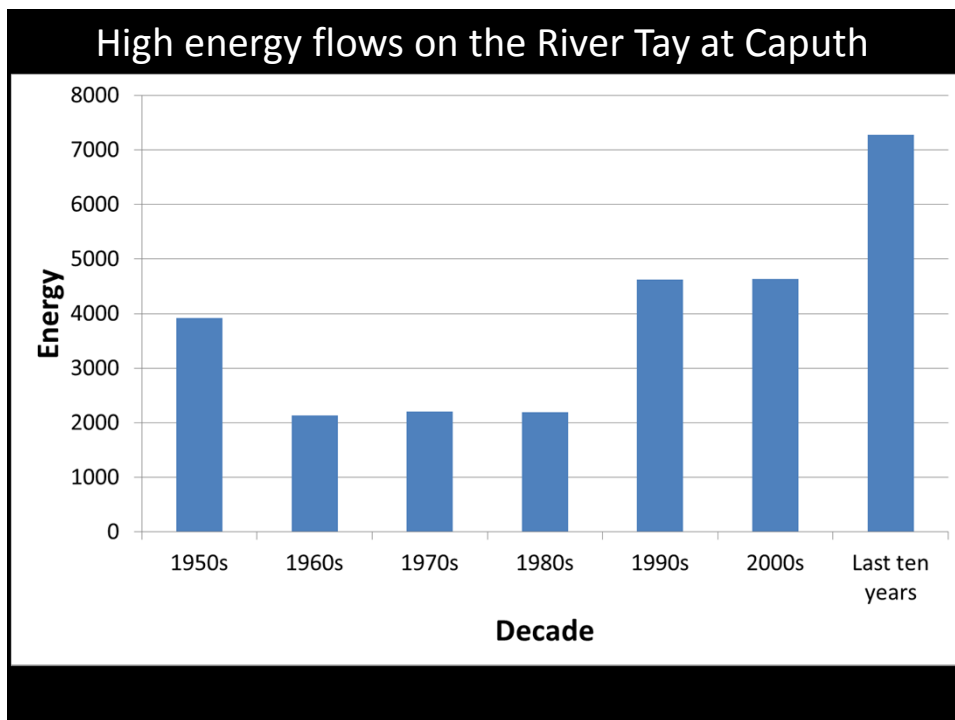
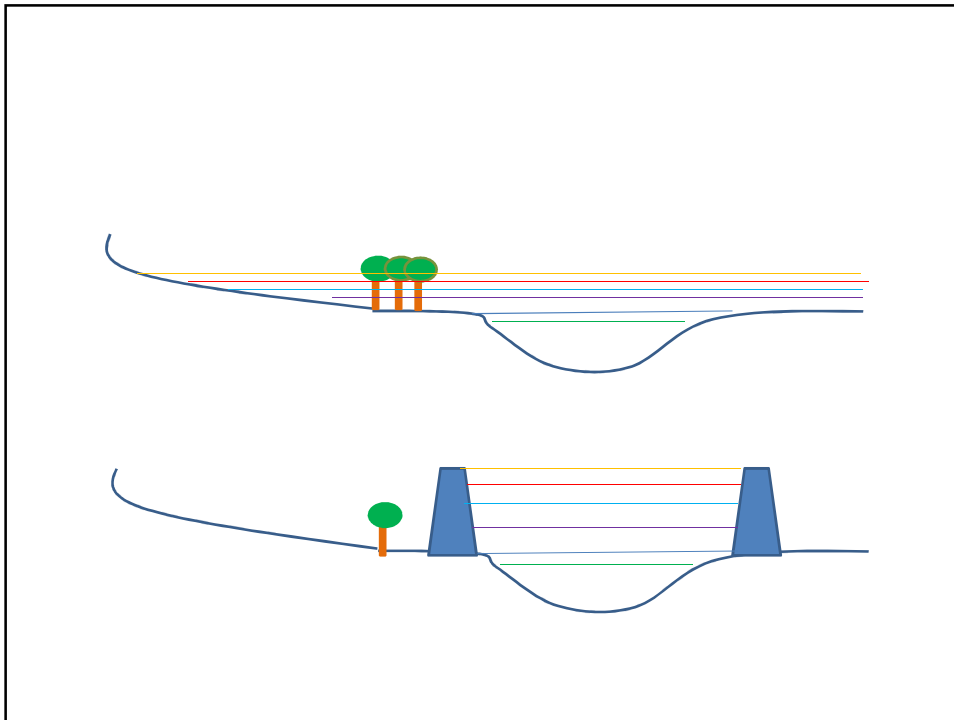


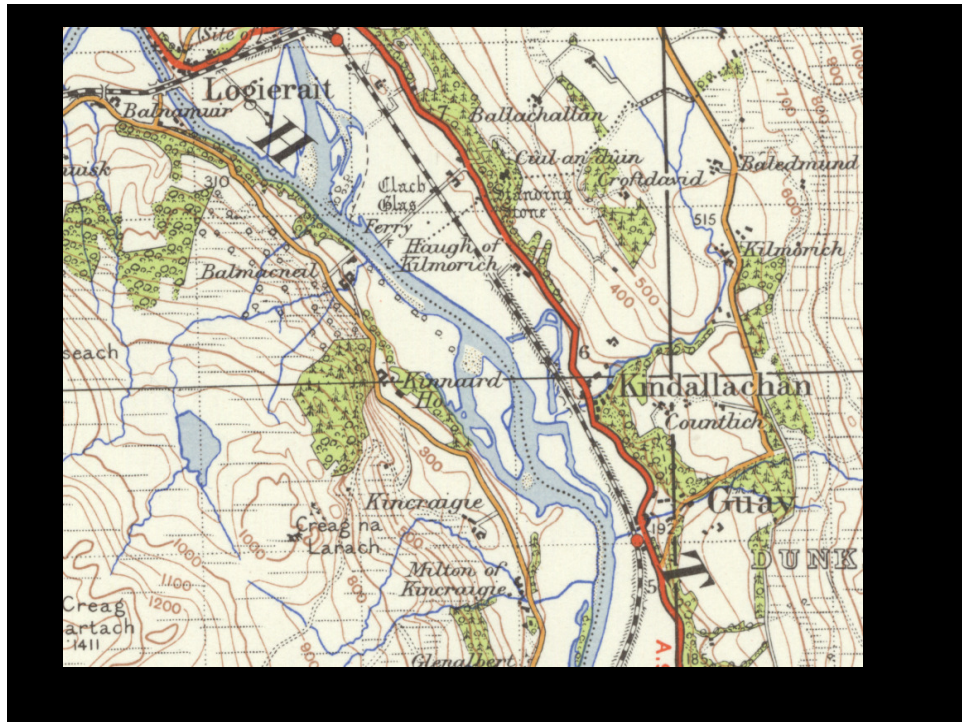
Prior to December 2015 flood







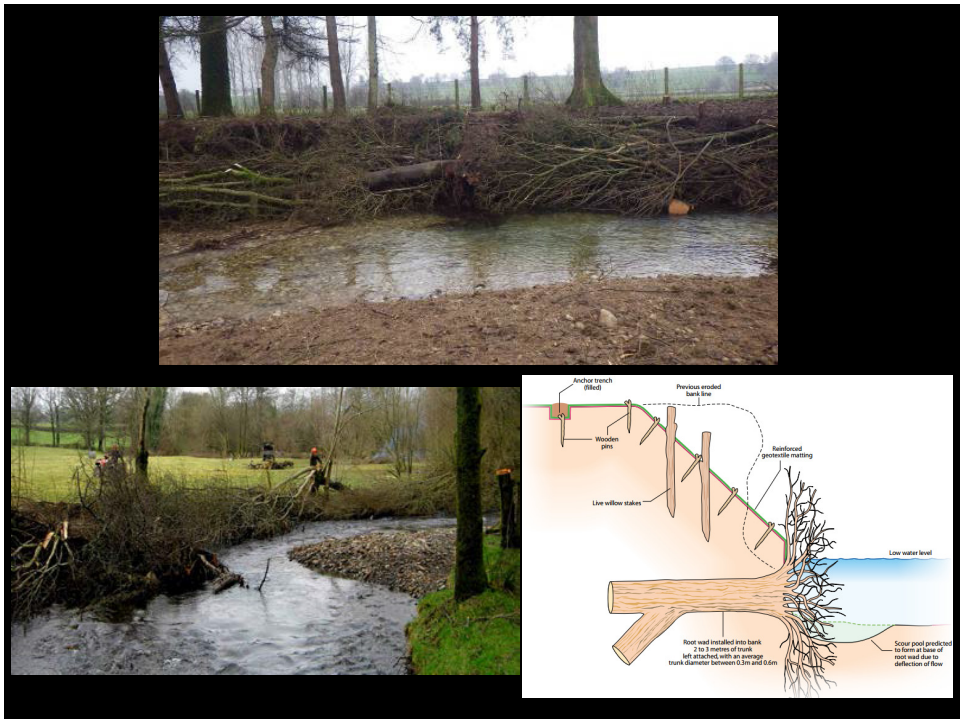


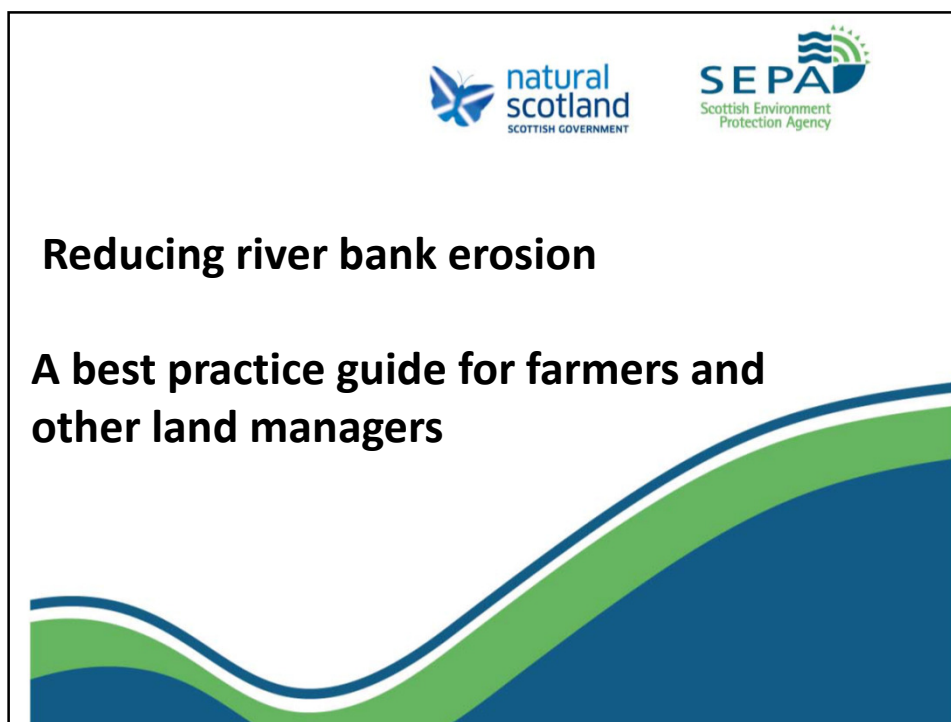












uk/regulations/water/engineering/grant-scheme-for-riverbank-repair

Grant scheme for riverbank repair demonstration sites

SEPA Scottish Environment Protection Agency

Media Centre Jobs FAQs Pay my account

Regulations Environment About us Library Contact

Regulations

- How we regulate
- Authorisations and permits
- Consultations
- Enforcement
- Air
- Climate change
- Control of major accident hazards (COMAH)
- Land
- Pollution prevention and control
- Radioactive substances
- Waste
- Water
 - Hydropower
 - Abstractions
 - Aquaculture
 - Engineering
 - Engineering guidance
 - Grant scheme for riverbank repair demonstration sites
 - Reservoirs
 - Groundwater
 - Impoundment
 - Pollution control
 - Diffuse pollution
 - Small scale sewage discharges
 - RBMP
 - Advertised applications
 - Guidance

You are here: [Home](#) > [Regulations](#) > [Water](#) > [Engineering](#) > Grant scheme for riverbank repair demonstration sites

Grant scheme for riverbank repair demonstration sites

- What is the Riverbank Repair Demonstration Site Grant Scheme?
- Criteria that must be met by the applicant
- Criteria that the demonstration site must meet
- Inspections
- Legal base
- State aid
- Regulations and consents
- Health and safety
- How to apply

This information was published on 6 October 2016 and updated on 27 April 2017

Related items

- [Water Environment Fund](#)
- [Guidance for applicants to the grant scheme for riverbanks repair demonstration sites](#)
- [Riverbank repair demonstration site grant application form](#)

What is the Riverbank Repair Demonstration Site Grant Scheme?

The Riverbank Repair Demonstration Site Scheme provides funding for sites to demonstrate the benefits of natural bank protection techniques using trees or parts of trees. Examples can be seen in the guidance document: [Reducing river bank erosion: A best practice guide for farmers and other land managers](#).

As the fund is limited, the scheme will only be able to fund a small number of sites in accessible rivers distributed around Scotland. The bank protection must be installed to help repair and protect banks damaged by flooding between 6 December 2015 and 6





SEPA
Scottish Environment
Protection Agency

Your local SEPA teams

Galashiels	01896 754797
Edinburgh	0131 449 7296

www.sepa.org.uk

River Teviot

