

Derelict to Productive – No 6 - A Practical guide – Grassland Management-The Effects



The successful management of your grassland is dependent on a number of factors. The grazing regime you implement will obviously have a big effect as well as the type of livestock. Away from livestock grazing, there are also other options to aid you in your grassland management. In this guide we look at some of the effects of different grazing management.

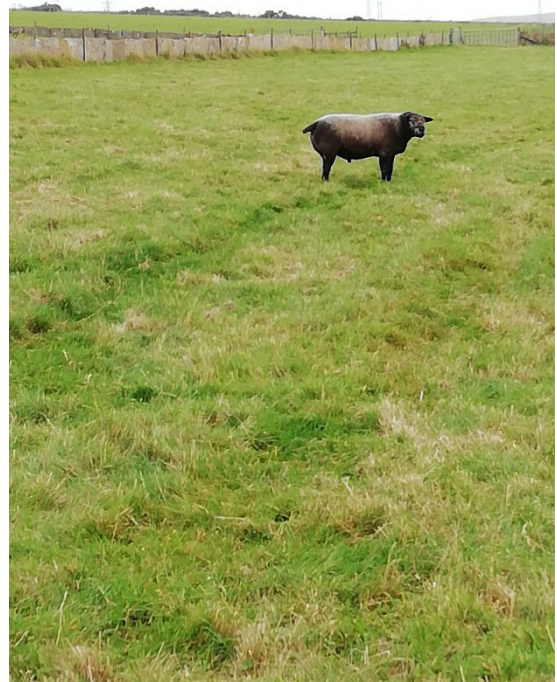
Set Stocking



This field was grazed using a set stocking system which has resulted in some areas of rank grassland which livestock find unpalatable and will not graze. This results in a lot of wastage

Set Stocking & Topping

This field was set stock grazed and subsequently topped. Topping is a management tool available to you to reduce rank vegetation and improves regrowth. It can also reduce the spread of weeds such as thistles and nettles



Derelict to Productive – No 6 - A Practical guide – Grassland Management-The Effects



Overgrazing

This field has been grazed by cattle when conditions were too wet. This has resulted in poaching of the ground, an unwanted grazing management effect. This is more difficult to sort and can also cause rushes to gain a foothold.

Rotational Grazing

This field has been used in a rotational grazing system for sheep. There is no wastage and it also means weeds have little chance to establish due to grazing pressure.



Mowing

This field has been mown to secure winter fodder. This is an ideal tool where grass becomes too strong to be grazed. It has similar effects to topping.