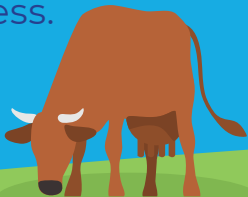


Run a farm or croft?

SR
DP

Farm
Advisory
Service

You are entitled to
claim up to £5,860*
of professional
support for your
business.



* Terms and conditions apply.
Businesses that received support before
04 July 2024 are eligible to apply again.
See www.fas.scot for full details.

Integrated Land Management Plans (ILMP)

The government funds up to £2,000 per plan

Undertake an independent and confidential assessment of your business with the help of an experienced farm business adviser of your choice.

Annual Carbon Audits

Funding available of up to £660 for an initial carbon audit

A funded carbon audit of your farm or croft can identify performance improvements and cost savings, review resource efficiency and benchmark performance with similar business'. For repeat audits £330 of funding is available annually to monitor performance and the impact of changes.

Specialist advice

Fully funded up to £3,200 for you to receive specialist advice on two topics including:

- Animal Welfare
- Archaeological and historic site advice
- Biodiversity, habitat and landscape management
- Carbon audit action plan
- Climate change adaptation and mitigation
- Crofter's plan
- Farm Business Efficiency
- Organics
- Resilience planning
- Soil and nutrient management
- Succession planning
- Water pollution prevention and control



Apply now

New and established businesses can find out more and apply for funding by post or online.

By post: call 0300 323 0161 or email advice@fas.scot for an application form.

Online: fas.scot/advice-grants